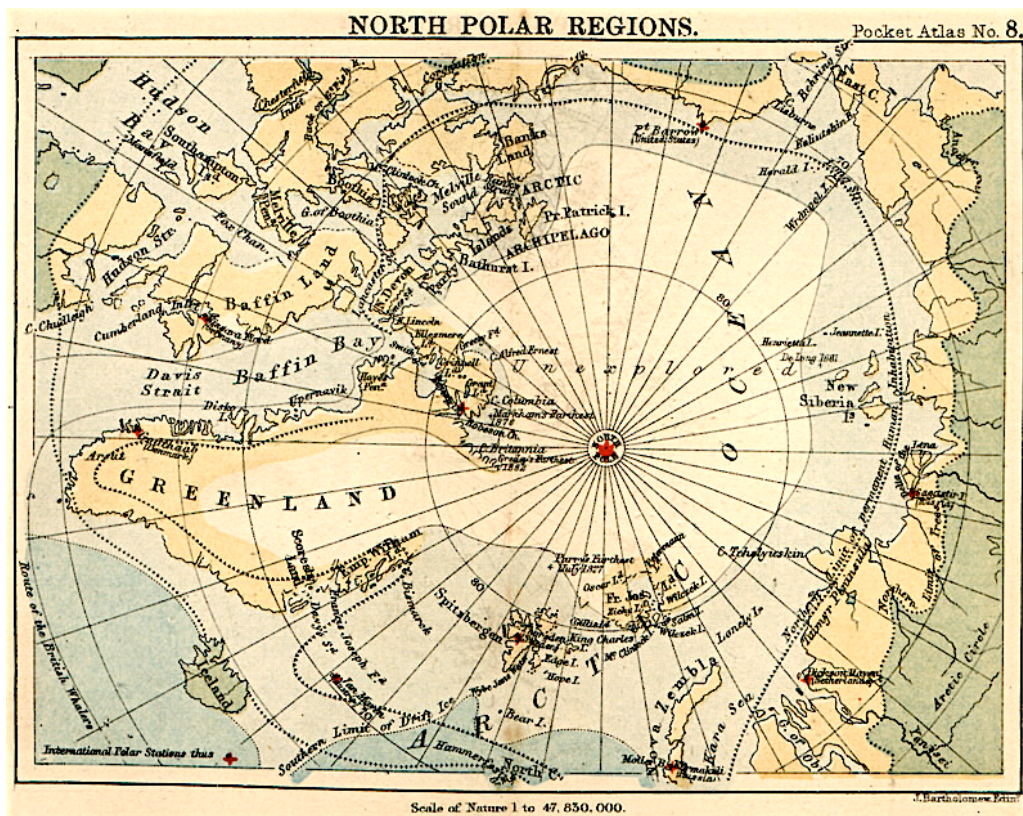


1886

John Bartholomew

The famous Edinburgh firm of Bartholomew set a new standard in miniature cartography. The first edition of the pocket world atlas by John Bartholomew (1831-1893) appeared in 1886, with fifty-four double-page chromolithographic maps about 130/5 x 100 mm:

*Frontispiece* (map of the world on heart projection); *Astronomical geography*; *The World, (orographical)*; *Ocean currents, &c.*; *Temperature chart of the world*; *Time chart of the world*; *The British Empire*; *North polar regions*; *Europe*; *Central Europe, (orographical)*; *British Isles, (orographical)*; *British Isles, (railways)*; *England & Wales*; *Central England*; *Environs of London*; *Liverpool / Manchester*; *Scotland*; *Central Scotland*; *Glasgow / Edinburgh*; *Ireland*; *Environs of Dublin*; *France*; *Germany*; *Sweden, Norway, & Denmark*; *Austria-Hungary*; *Spain and Portugal*; *Italy*; *Balkan Peninsula*; *Asia*; *Palestine*; *Persia, Afghanistan, &c.*; *India*; *Further India*; *China & Japan*; *Africa*; *Egypt & the Nile basin*; *Central Africa*; *South Africa*; *North Atlantic Ocean*; *North America*; *Dominion of Canada*; *Canada (eastern provinces)*; *Canada (north west provinces)*; *United States*; *Eastern States*; *Environs of New York*; *Western States*; *Mexico & Central America*; *West Indies*; *South America*; *Central South America*; *Oceania*; *Australia*; *New Zealand, Tasmania, & Fiji Is.*



The work was continuously revised and enlarged with some maps replaced and new ones added. During 1886 and 1887 there were ten London editions issued, including one for the Society for Promoting Christian Knowledge, together with two New York editions.

A major improvement was the sixty page index introduced for the second edition. *Russia in Europe* was added and map 16, with the environs of Liverpool and Manchester, was briefly dropped. Two more new maps were included from the sixth edition: *Holland and Belgium* and *Environs of Paris*.

The four editions of 1888-1891 are not numbered and in the first the maps were increased to sixty three. In the same year Bartholomew handed over the famous firm to his son John George, who in 1889 replaced his father's signature with 'J. Bartholomew & Co. Edinr.' on all the maps. In 1890 he increased the number to seventy two.



From 1888 John George Bartholomew introduced a companion volume: *The Pocket gazetteer of the world: a dictionary of general geography*, London, John Walker & Co. and also New York, G.P. Putnam's Sons. It included nine world maps:

*Height of land, and depth of sea; Zones of temperature; Mean annual rainfall; Ocean currents, land surface features; Prevailing winds; Density of population; Races of mankind; The British Empire; Principal routes of commerce.*



His new *Miniature atlas* then seems to have claimed his attention for some years (see 1892), but he eventually returned to the pocket atlas. In 1897 he published a new edition with his own name on the title-page, but it was called the 10th edition even though it was really the 15th if the 1888-1891 ones are included. Seventy two new single page maps and plans were printed on the back of the recto of the double-page ones. Copies of both the 10th and 11th editions are also known without dates.

The first New York edition of 1887 had forty two maps only:

*Frontispiece* (map of the world on heart projection); *The World* (orographical); *North polar regions*; *Europe*; *England*; *Scotland*; *Ireland*; *France*; *Holland and Belgium*; *Germany*; *Norway and Sweden*; *Russia*; *Austria-Hungary*; *Spain and Portugal*; *Italy*; *Balkan Peninsula*; *Asia*; *Persia, Afghanistan, &c.*; *India*; *Farther India*; *China and Japan*; *Africa*; *Egypt*; *Central Africa*; *South Africa*; *North Atlantic Ocean*; *North America*; *Dominion of Canada*; *Canada (eastern provinces)*; *Canada (north west provinces)*; *United States*; *Eastern and middle states*; *New York / Boston*; *Central and western states*; *Southern states*; *Pacific states and territories*; *Mexico & Central America*; *West Indies*; *South America*; *Central South America*; *Oceania*; *Australia*.

However, a 'new edition' published in the same year now had the usual number of maps. The 1893 issue had no edition statement on its title-page but the 1897 one was the same as the London edition, including the statement '11th edition'.

*The Pocket atlas of the world.* London, John Walker & Co., 1886, 1886, 1886, 1887, 1887, 1887, 1887, 1887, 1887, 1887, 1888, 1889, 1890, 1891, 1897, 1897, 1900.

*The Pocket atlas of the world.* New York, G.P. Putnam's Sons, 1887, 1887, 1893, 1897.

